



Project Summary No. PS-1156-ND-SL

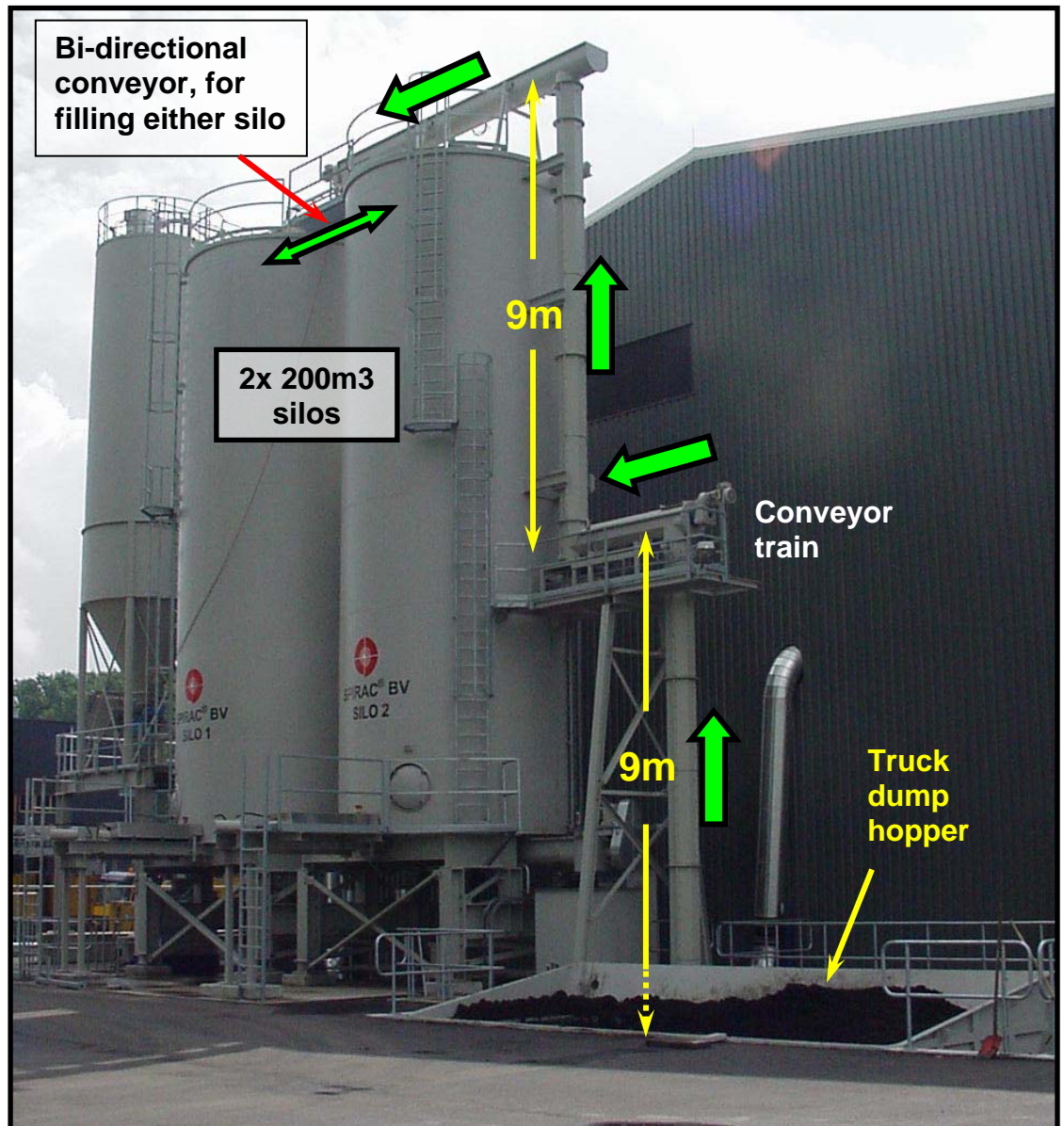
Application: Mechanically dewatered sludge receival, conveying and storage
Operation since 2003

The site: A sludge drying plant in The Netherlands receives trucked dewatered sludge from regional WWTPs for drying. SPIRAC BV provided a truck unloading hopper, conveying train and silo storage system. The system was commissioned in 2003.

Specs:
Transfer capacity = 40m³/hr (1400 ft³/hr)

Vertical Lift = 18m (59')

Silo capacity:
200m³ x2



The SPIRAC BV scope of supply: SPIRAC BV supplied nine conveyors, two silos and structural supports. Access platforms, ladders, railings, and ancillary items supplied by others.

Contact:

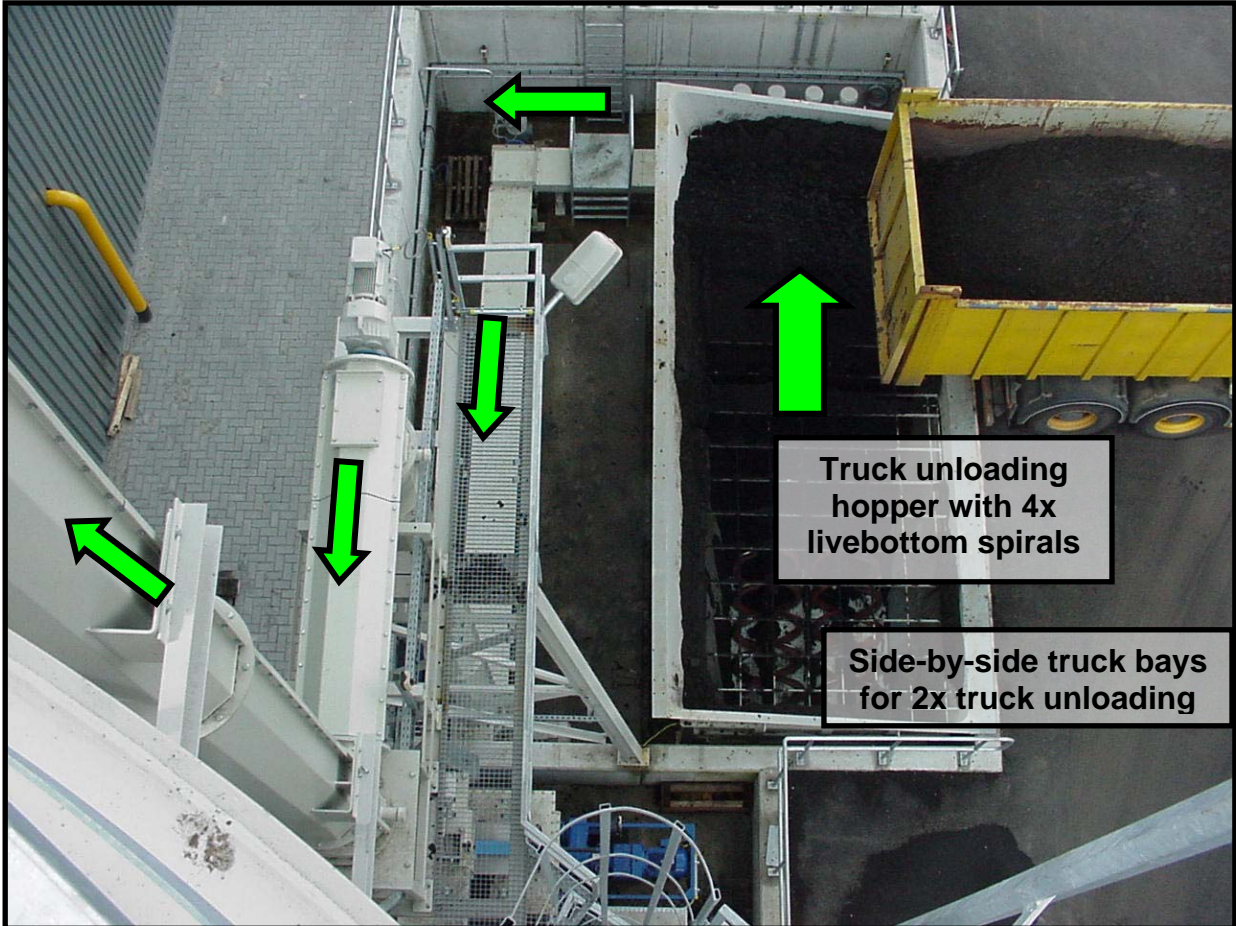
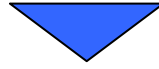
For additional information or contact details for this project or your local SPIRAC office, check our Website at www.spirac.com



SPIRAC[®]
Conveying Technology

Project Summary No. PS-1156-ND-SL

View from top of silo



Truck unloading
hopper with 4x
livebottom spirals

Side-by-side truck bays
for 2x truck unloading

Four low RPM high
strength spirals
feed a single
conveyor.



Safety grate

SPIRAC Contact:

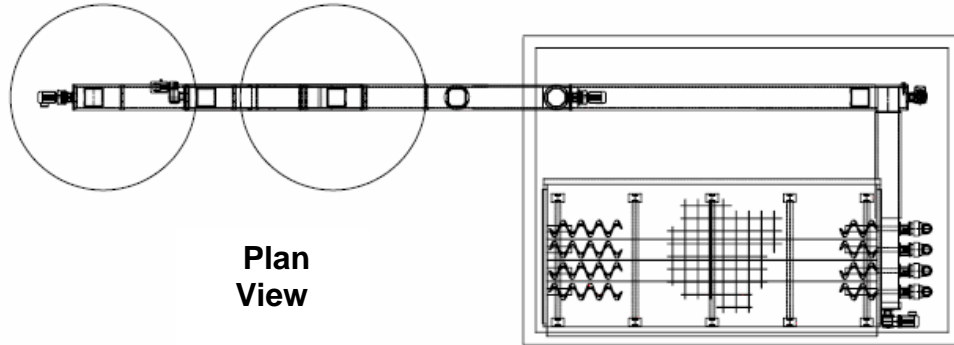
For additional information or contact details for this project or your local SPIRAC office, check our Website at www.spirac.com



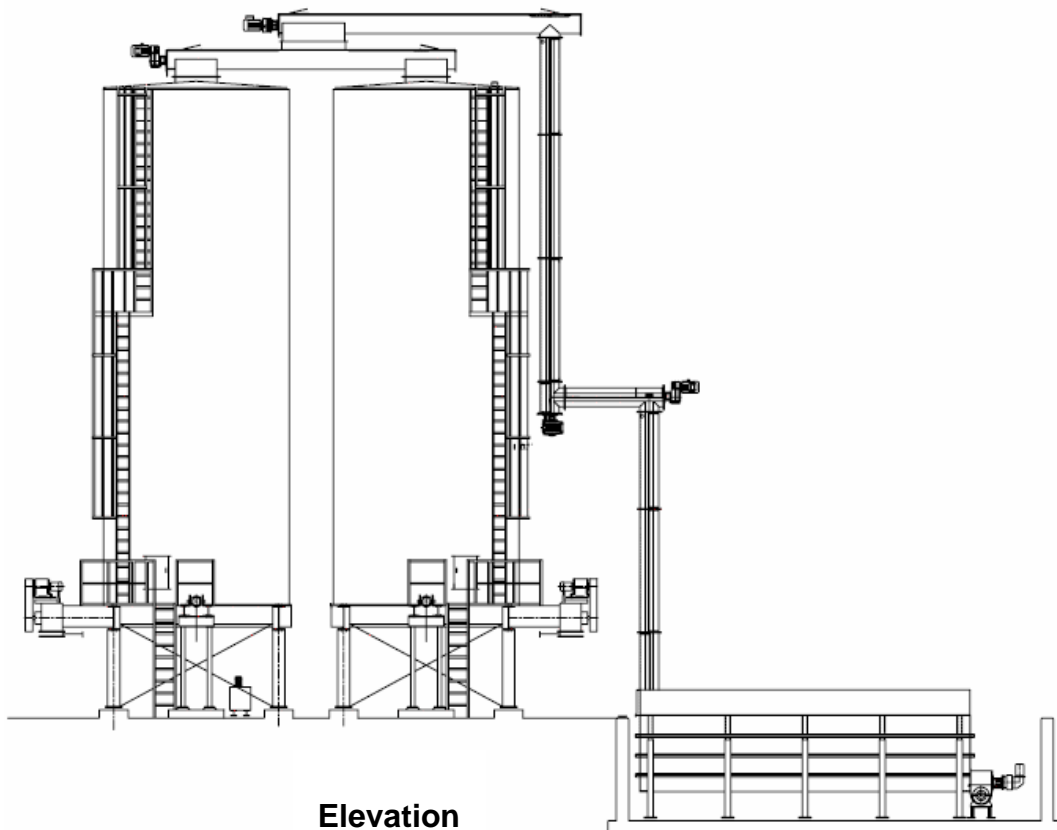
SPIRAC[®]
Conveying Technology

Project Summary No. PS-1156-ND-SL

Drawing Excerpts (Supports and other ancillary items left out for clarity)



Plan View



Elevation View

SPIRAC Contact:

For additional information or contact details for this project or your local SPIRAC office, check our Website at www.spirac.com